



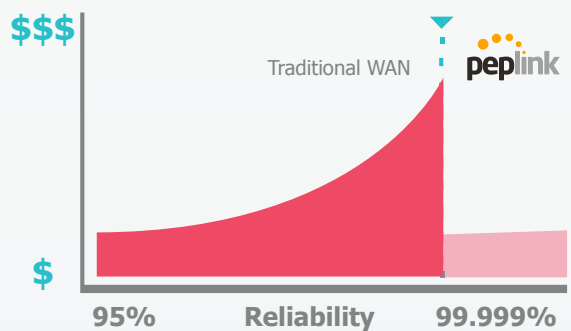
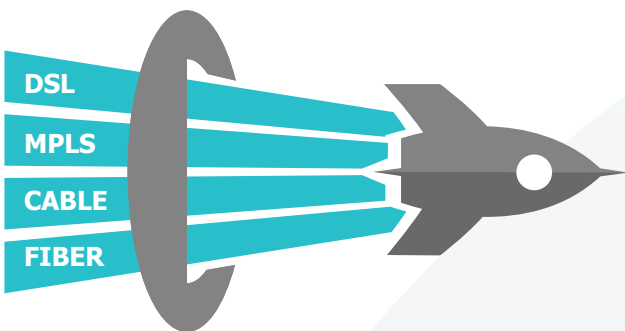
Balance 305

Unbreakable Internet. VPN Connectivity.
Bandwidth Bonding.



The Peplink Balance SD-WAN router lets you take control of your WAN and achieve unbreakable Internet connectivity. Centralised cloud management simplifies network setup, configuration, and maintenance.

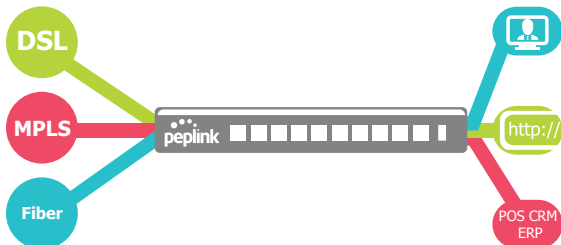
Greater Speeds, Absolute Reliability, up to 90% Cost Reduction



Using SpeedFusion™ bandwidth bonding technology, you can combine multiple DSL, cable, 4G LTE, and 3G links – up to 13 of them into a single high-speed SD-WAN connection. This enables you to access headquarters at greater speeds than you could achieve with a single link.

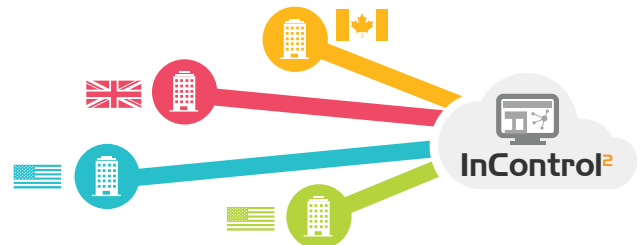
With each link you add, the SD-WAN connection increases its reliability. Use multiple connection technologies from diverse ISPs to provide connectivity resilience at a fraction of what it would cost using traditional WAN alone.

Intelligent VPN Traffic Routing



Guarantee the session integrity of sensitive applications such as point-of-sale or credit card transactions using Hot failover. Stream HD videos and have smooth videoconferences using SpeedFusion VPN technology. Use your commodity links to offload for your bulk traffic to the public Internet, while saving your critical traffic for private links.

Simple, Powerful Cloud Management



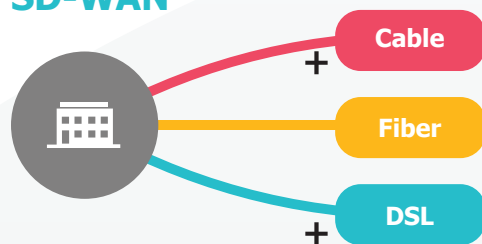
Using InControl, our powerful SD-WAN controller, you can easily perform a multitude of tasks from a browser. Set up a star, mesh, or point-to-point VPN with just a couple of clicks. Configure groups of devices at once to save time. Schedule automatic firmware updates for your devices.

Flexibility and Routing Intelligence Through WAN Virtualisation

Traditional WAN



SD-WAN



Greater Flexibility

Peplink routers are capable of taking multiple Internet links and turning them into a single connection. To increase speed or reliability, simply add more links.

Automatic Failover

Peplink Routers keep your network up and running by continually checking the health of all connected links and routing traffic around inactive or intermittent connections.

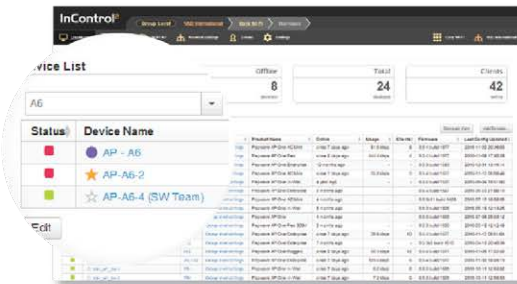
Application-Awareness

Set-up your traffic priorities, including VoIP and custom application traffic, with a few clicks. Once configured, all traffic is managed automatically by the software defined rules set on the device – no human interaction is required.

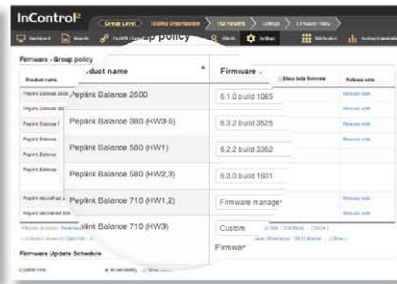
More Information: www.peplink.com/sd-wan

InControl SD-WAN Controller for Simplified Network Management

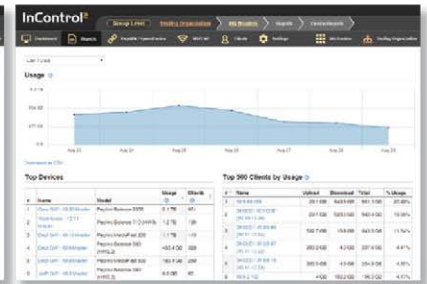
DASHBOARD VIEW:



GROUP FIRMWARE POLICY:



GROUP BANDWIDTH USAGE REPORT:



Comprehensive Reporting

Using InControl, branch offices can be monitored and managed centrally, giving network administrators full control over their networks using a single interface. Monitor your network's bandwidth consumption, connection status, connected clients and more in an easy to use bird-eye view.

Easy Management

Remotely access the Web Admin of any router in your network, and make configuration changes without going onsite. Push a configuration profile to multiple devices, and set-up groupwide firmware updates to save time.

More Information: www.peplink.com/incontrol

All-in-One AP Controller Solution. Cost-Effective Branch Office AP Management. Built-in Captive Portal.



Built Into All Balance Routers

AP Controller software comes standard with every Peplink router, making it a cost-effective AP management solution for small to medium locations.

Easier Management

Control and monitor your Pepwave AP using a centralised admin interface. Just connect a Pepwave AP to the network and it will be discovered by the Balance automatically. Manage all network connections, local client access, and user bandwidth policy.

Easy Wi-Fi Portal

Peplink's AP Controller solution features a built-in captive portal, which allows you to provide Wi-Fi hotspot service to your customers or Wi-Fi access to your guests in a corporate environment. From showing a splash screen for free users to accept service terms to creating a user login for your paid customers, you can easily customise your Wi-Fi portal in just a few clicks.

More Information: www.peplink.com/ap-controller



SPECIFICATIONS

Product Details

- Model: Balance 305
- Product Code: BPL-305
- Designed For: Mid-Size Business

Capacity

- Ethernet WAN Ports : 3 (GE)
- LAN Ports : 3 (GE)
- Wi-Fi Interface : No
- Embedded LTE Modem : No
- USB WAN Modem Port*1 : 1
- Recommended Users*2 : 50-500
- Stateful Firewall Throughput*3 : 1Gbps

Core Functionality

- 802.1q VLANs supported : 128
- Port-Based VLAN : Yes
- Load Balancing/Failover : Yes
- Load Balancing Algorithms : 8
- Drop-In Mode : Yes
- Inbound Load Balancing : Yes
- InControl Cloud Management : Yes

PepVPN/SpeedFusion Functionality

- PepVPN : Yes
- SpeedFusion Hot Failover : Yes
- SpeedFusion WAN Smoothing : Yes
- SpeedFusion Bandwidth Bonding : Yes
- Number of SpeedFusion Peers*4 : 2/30*7
- SpeedFusion Throughput : 150Mbps (256-bit AES)*3
- SpeedFusion Throughput : 150Mbps (No Encryption)*3

IPsec/L2TP/PPTP VPN Functionality

- IPsec VPN (Network-to-Network)*5 : Yes
- Number of IPsec Tunnels : 20
- L2TP / PPTP VPN Server : Yes
- Recommended PPTP/L2TP : 50 VPN Users

AP Controller Functionality

- Manage Pepwave AP Series : Yes
- Maximum Number of AP : 50 Supported
- Manage Remote AP & Multiple : Yes Config Profiles*6

Advanced QoS Functionality

- Bandwidth Usage Monitor : Yes
- QoS for VoIP and E-commerce : Yes
- User Groups Bandwidth Control : Yes
- Web Blocking : Yes
- Web Filtering Blacklist : Full

Hardware

- Operating Temperature : -40° – 65°C
- Dimensions : 44 x 426 x 305 mm
- Weight : 4 kg
- LACP (802.3ad) NIC Bonding : Yes
- Power Consumption : 50W
- Power Requirements : Universal Input 100V – 240V AC
- 1U Rackmount : Yes
- High Availability : Yes
- LAN Bypass : Yes
- Dual Hot Swap Power Supply : No

Certifications

- FCC, CE, RoHS

Warranty

- 1-Year Limited Warranty

Package Content

- Balance Router
- Power Cord
- 1 Pair of Mounting Brackets

Ordering Information

- Product Code : BPL-305
- Description : 3x GE WAN ports and 3x GE LAN ports. SpeedFusion available as a paid upgrade.

*1 For a list of supported modems, please refer to <https://www.peplink.com/modem>.

*2 Recommendation for sizing purposes only. No software restrictions applied.

*3 Router Throughput and PepVPN/SpeedFusion Throughput is based on Ethernet frame sizes of 1280 or 1518 bytes. Actual performance can vary across different networking environments. Figures apply to the latest hardware revision.

*4 Number of peer Peplink or Pepwave devices you can connect using SpeedFusion VPN.

*5 IPsec only supports connection with Cisco, Juniper, Peplink or Pepwave devices.

*6 Balance 305 comes with AP Controller Pro, which supports multiple configuration profiles with multiple SSIDs, and you can manage remote APs outside the local physical LAN.

*7 Balance 305 supports 2 SpeedFusion peers. It supports up to 30 SpeedFusion peers with purchase of SpeedFusion License (BPL-305-SPF).

Why Rising Connection is using equipment designed and built by Peplink?

- Industry leader in both ISP & Data Bonding across multiple technology platforms
- Reliable hardware from entry level professional equipment through to advanced Enterprises solutions
- Worldwide supported and local support here in Australia by fully trained technicians
- Reliable and secure redundancy paths for mission critical sites
- Designed for maximum possible business uptime

This demonstrates to Rising Connection that you will have the Quality, Reliability and Product Support.